

SOFTWARE

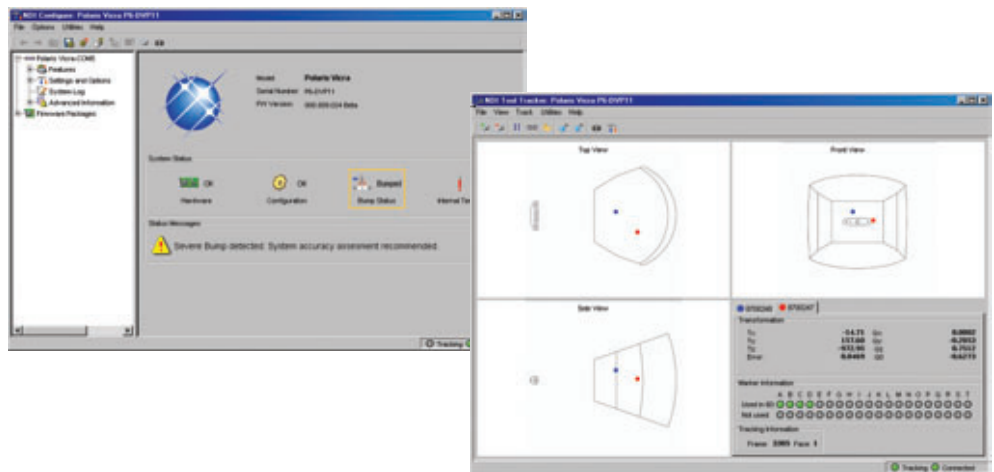
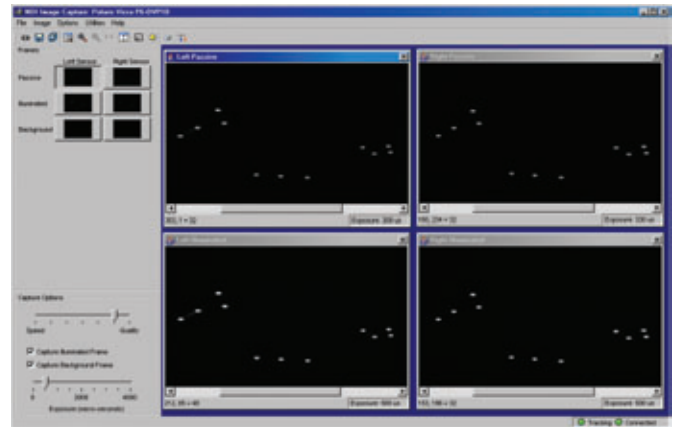
The NDI Polaris Spectra and Polaris Vicra Systems come complete with NDI ToolBox software and an application program interface (API).

NDI TOOLBOX

NDI ToolBox is a suite of utilities for diagnostics, maintenance, testing and development support for the Polaris Spectra and Polaris Vicra Systems.

GENERAL FEATURES

- View system information such as hardware version, firmware versions and bump sensor status
- Change system parameters such as IR sensitivity level
- View system log file for system history information
- Update the version of firmware in the system or change between versions of firmware
- Capture IR images of the environment. These images help to identify possible interfering IR light sources
- Track tools for diagnostic assistance
- Collect and save tool tracking data



APPLICATION PROGRAM INTERFACE (API)

The API allows you to integrate the Polaris Spectra or Polaris Vicra System into your application. An API Windows-based sample program, which includes sample code using C++, is included with all systems to assist you in developing your own software applications.

The API follows the proven tradition of the well accepted Polaris API and is fully compatible with Polaris API Rev 2X. The API enables an easy system integration into your specific applications.